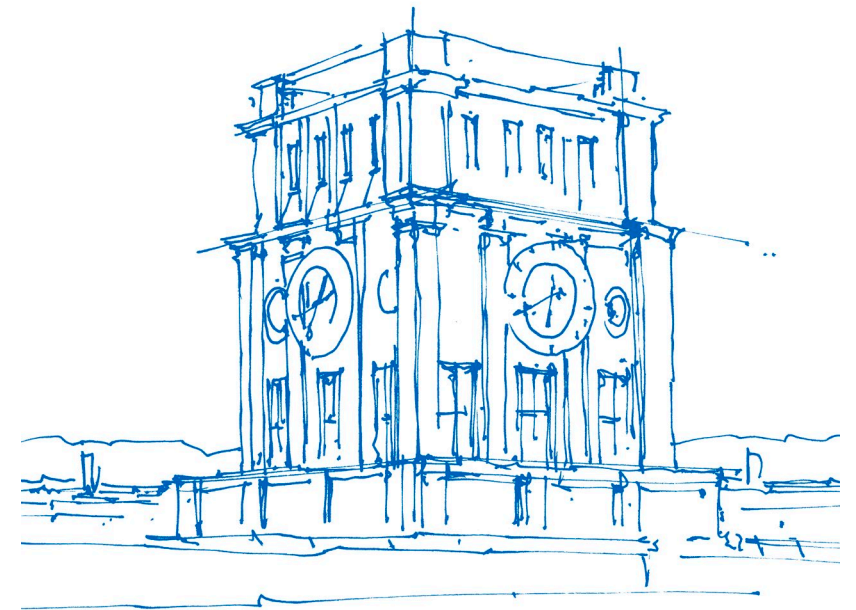




TUM School of Management – where Management meets Technology

**Come and study at the Technical University
of Munich in Germany**

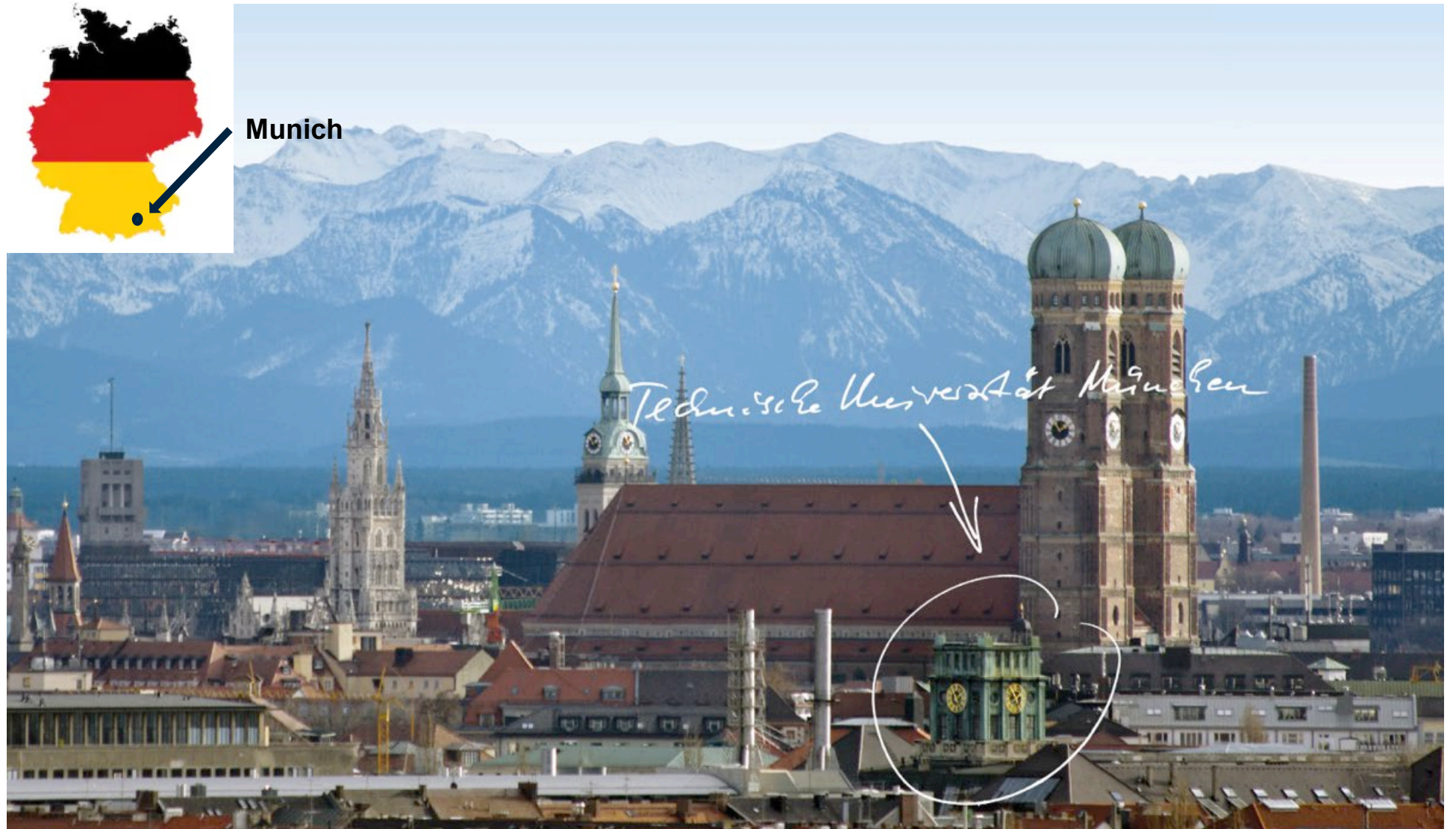


Uhrenturm der TUM

TUM School of Management (TUM MGT) - what makes us, drives us?

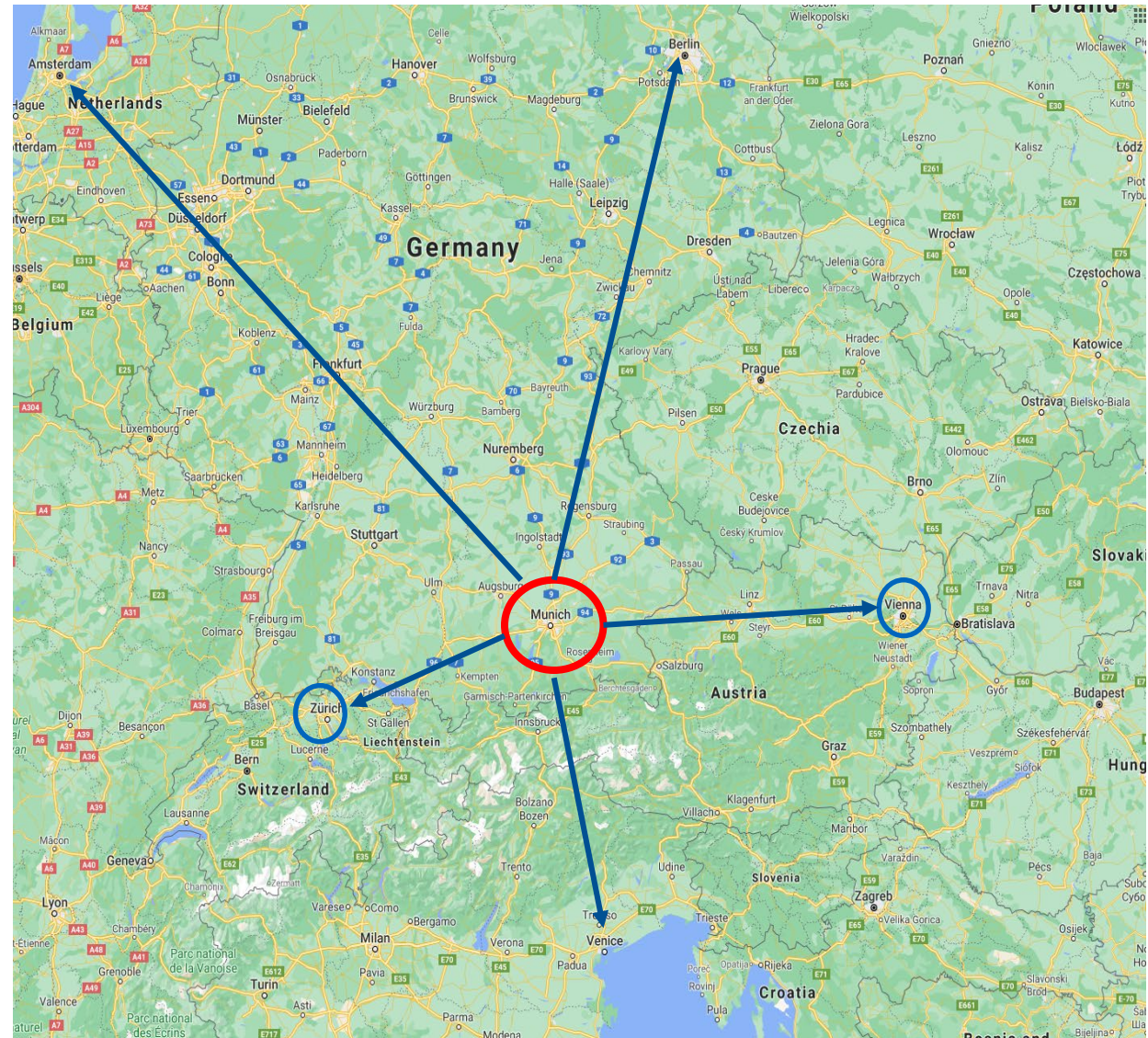


Study in the Heart of Munich



Munich

- ...Lies in the middle of Europe
- ...Is Bavaria's biggest city (1.5 million inhabitants)
- ...Is BMW's hometown
- ...FC Bayern Munich's hometown
- ...The city of beer (more than 60 beer gardens and the largest beer house in the world, the Hofbrauhaus, are located here)
- ...The famous 'Disney castle' "Schloss Neuschwanstein" is just 1.5 hours away from Munich
- ...Silicon Valley of Germany (hub for many start-ups and big tech companies)
- ...approx. 3.5 hours to Zurich, 5 hours to Venice, 4 hours to Vienna and 5 hours to Berlin
- ...perfect town for ski enthusiasts, hikers and nature lovers



Technische Universität München: History and Excellence

1868: Foundation as „Royal Polytechnic“ by King Ludwig II



Awarded as one of the best universities in Germany

Appointed “University of Excellence” three times in a row in 2006, 2012 and 2019 by the Federal Ministry of Education

TUM School of Management: Overview

- Founded in 2002
- Approx. 6,500 students
- Approx. 100 co-operations with international universities
- Approx. 55 professors
- Approx. 300 academic staff
- € 8 million third-party funds per year
- **All academic programs up to 100% in English**
- Lecture period
 - Winter semester: Mid-October until Mid-February
 - Summer semester: Mid-April until End of July
- Exam period
 - Winter semester: Mid-February until Mid-March
 - Summer semester: End of July until Mid-August
- **Triple Crown Accreditation**
 - TUM School of Management is the first management school at a German technical university to receive the prestigious Triple Crown accreditation



AACSB
ACCREDITED



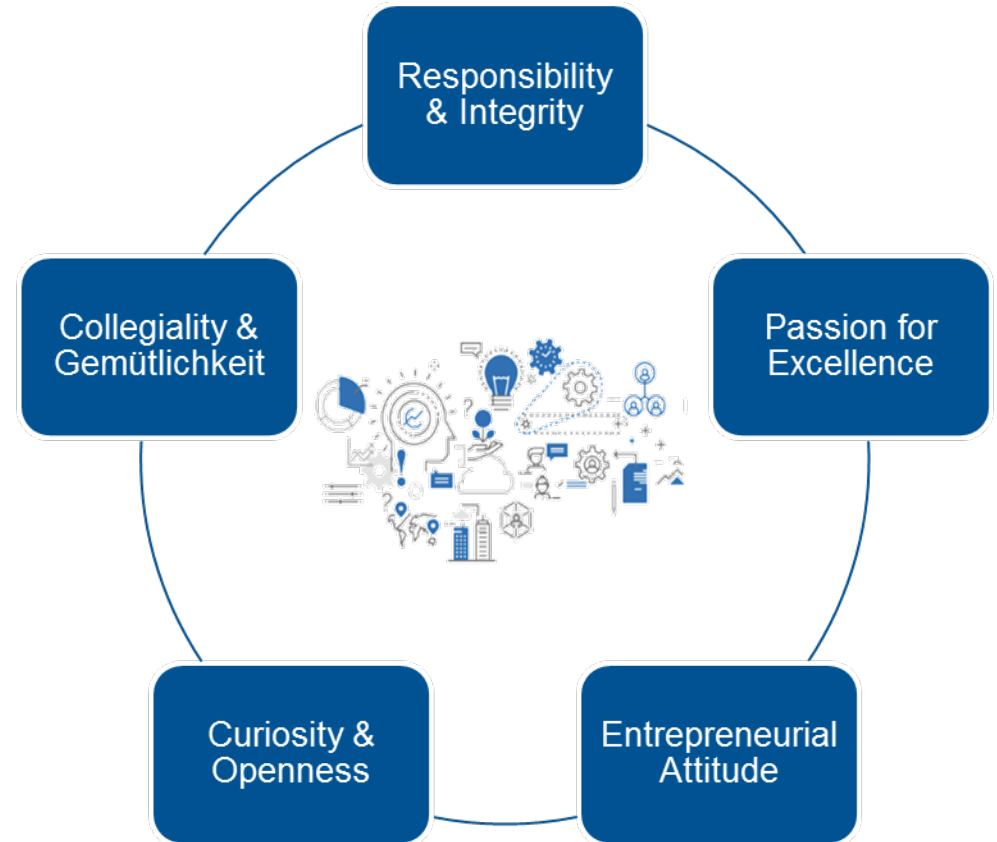
TUM School of Management: Mission, Vision & Values

MISSION

Grounded in TUM's technological and entrepreneurial ecosystem, TUM School of Management educates responsible talents and pursues relevant research to advance innovation-based businesses and societies in Germany, Europe and the world.

VISION

To become one of Europe's leading management schools at the interface to engineering and science, contributing to solutions for the grand societal challenges



TUM School of Management: Rankings

- **The TUM School of Management** has repeatedly been ranked as one of the best business schools...
 - ...among all German speaking universities (Handelsblatt)
 - ...among HR managers (Wirtschaftswoche)
- Received top scores in 11 out of 12 categories among student survey (CHE Ranking)
- Top ten rankings for Master in Management: #3 for Industry/ Manufacturing and #9 for Entrepreneurship (Financial Times)
- Worldwide Business Research Rankings, published by Korea University Business School, has recognized TUM School of Management as the best German business school

TUM School of Management: Academic Departments



TUM School of Management is a QTEM Partner



The [Quantitative Techniques for Economics and Management \(QTEM\)](#) network is an international network bringing together **outstanding students**, **Academic Partners** and **International Corporations** and was launched in September 2012.

QTEM is developing skills in analytic and quantitative techniques to support decision-making in an international context.



24

Universities--and growing!

16

Countries where you'll find
QTEM programs

47 %

Of our member universities have
Triple Crown accreditation

660 +

Average GMAT score

100 %

Of QTEM students do an
internship

Locations of TUM School of Management



Munich Downtown
Campus



Garching Research
Campus



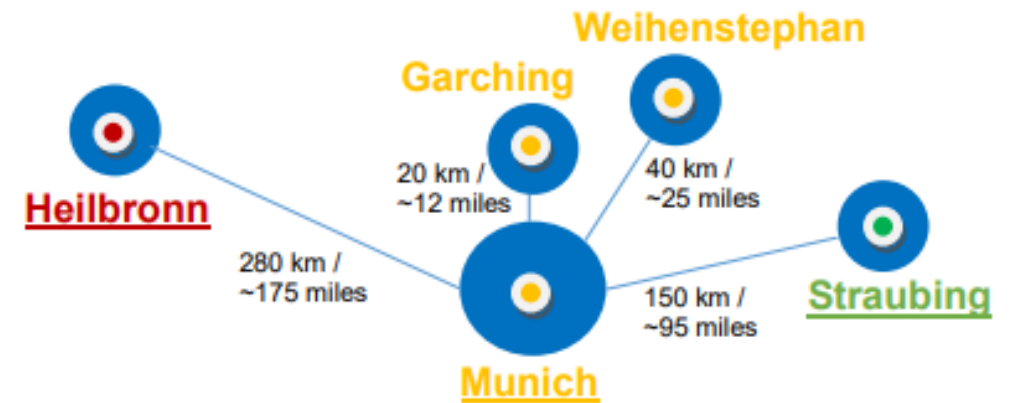
TUM School of Life
Sciences
Weihenstephan



Campus Straubing



TUM Campus
Heilbronn



Campus Munich

TUM School of Management is situated in the heart of Munich.

Known as a flourishing economic and technological hub, **Munich** is the city of choice for many global companies such as BMW, Siemens, and Allianz.

The unique position as a management school at a technical university, allows our students to combine their passion for management with technology and to develop an entrepreneurial spirit.

Aside from the main Munich campus, where the majority of business courses take place, our students can also attend courses at the campus in **Garching** and **Freising (Weihenstephan)**.



Munich is known for...

Neuschwanstein Castle



**Bavarian
„Lederhosen“**



**The Oktoberfest –
the world's largest folk festival**



**Schweinshaxe (Pork knuckle),
Brezn (brezel), 1 l Beer**



Photos left to right:
https://en.wikipedia.org/wiki/Neuschwanstein_Castle#/media/File:Schloss_Neuschwanstein_2013.jpg
 Pierre Rouchaléon
 Thorsten Naeser
 Auf dem Oktoberfest gehören Schweinshaxe, Brezeln und Bier zur Tradition. | Foto: Alex Rath/Getty Images

Enjoy impressive nature...



Lake Tegernsee



Zugspitze – the highest mountain in the country



Englischer Garten – large public park in the city centre

Live in a vibrant city...



River surfing on a standing wave



Meeting friends in a beer garden

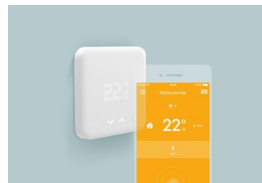


Enjoy your time on the rooftop terrasse at the TUM main campus

Munich as an Entrepreneurial Center

- Munich and Region Heilbronn are under the 5th largest start-up regions in Germany (Deutscher Startup Monitor 2018)
- **UNTERNEHMER TUM** - Center for Innovation and Business Creation at TUM – 50 Start-ups per
- Examples of companies founded in Munich:

NavVis



tado°



celonis



Stylight



Campus Heilbronn



Heilbronn combines Swabian charm with a flair for business. **There's a reason why TUM School of Management offers study programs in Heilbronn.**

The city lies in the heart of Heilbronn-Franken, the region of world market leaders. **A great number of innovative firms** (e.g. Lidl, Bechtle, Läpple, Brunnen, Wolfkran, Münzing Chemie, Rettenmaier), **many of them family-led small and medium-sized enterprises**, have achieved **top positions in world markets** from their locations right here.

This makes Heilbronn the perfect match for the particular **TUM model, with its combination of entrepreneurial spirit and innovative capacity.**

Moreover at the TUM Campus in Heilbronn, students have the opportunity to specialize in **"Digital Transformation"** and in **"Management of Family Businesses"**.

Campus Heilbronn

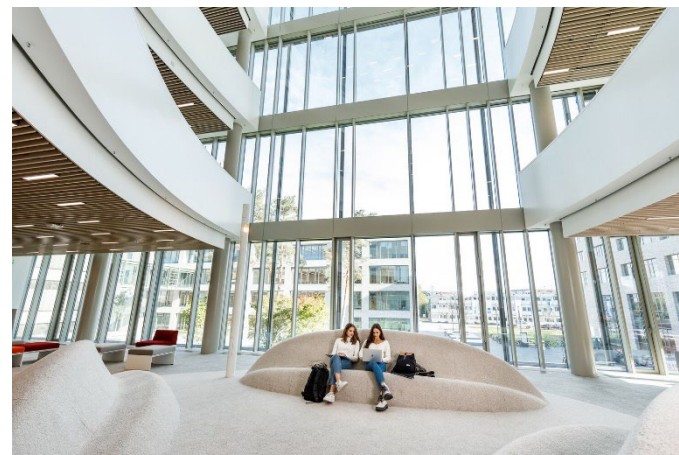
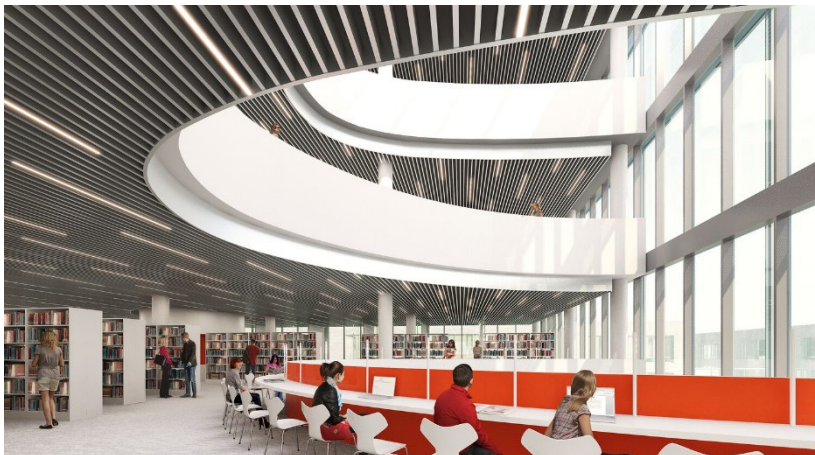
CampusRad Bikes - the smart, environmentally-friendly way to ride through the city

Buddy Program for exchange students

Heilbronner Weindorf, which organised every year in September

The search for an accommodation is much **easier**, since the students are offered rooms in the student dormitories

The architecture on campus is designed to enable close interaction between staff and students.



Campus Straubing

TUM Campus Straubing for Biotechnology and Sustainability is a new research center, fully integrated into the Technical University of Munich (TUM). **The Campus brings to life the connection between management studies and the natural science**

Developed in close cooperation with the State of Bavaria, the City of Straubing, and companies with sustainability requirements, the Campus offers outstanding conditions for students, combining stylishly renovated historic buildings with ultra-modern auditoriums and laboratories.



Campus Straubing



The city of Straubing has enjoyed an excellent reputation as a "**region of renewable raw materials**" for many years now

The young university town in Lower Bavaria is home to just under 48,000 inhabitants. It is the vibrant center of the fertile Gäuboden with 8000 years of history, where successfully **tradition, modernity and innovation are combined.**

A wide range of recreational opportunities, favored by the location on the river Danube and the immediate proximity to the Bavarian Forest, creates a wonderful balance to research and study. Do not forget to visit **Gäubodenvolksfest** – beer festival and funfair in August

A great advantage: the search for a room is easier, faster and cheaper than in Munich, so that students can start their studies in a more relaxed way.

TUM School of Management: Industrial Co-operations



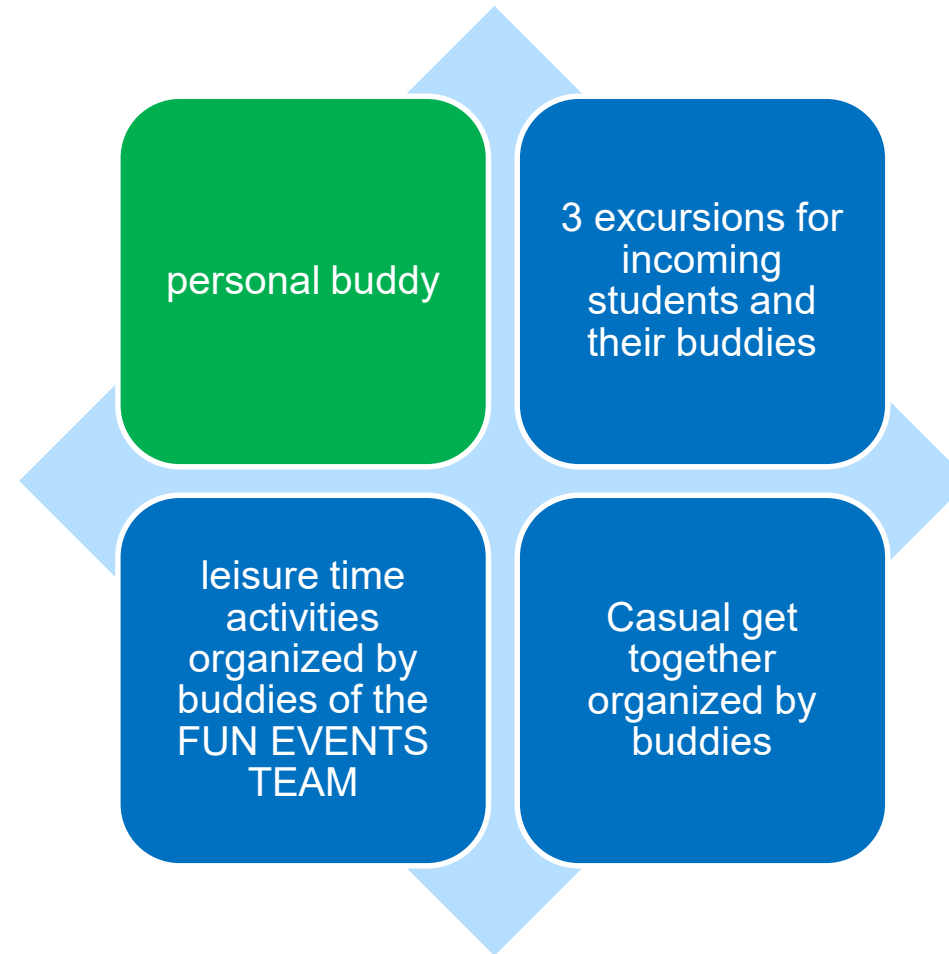
Extra curricular offers

- Welcome session for all TUM School of Management exchange students
- TUMi Welcome weeks, Excursions, language café, parties...
- BMW Plant Tour
- Munich City Tour
- Free language courses (17 languages, including German as a foreign language)
- University sports center
- ...

TUM SoM exchange student city tour



Buddy program at the TUM School of Management





Cost of living

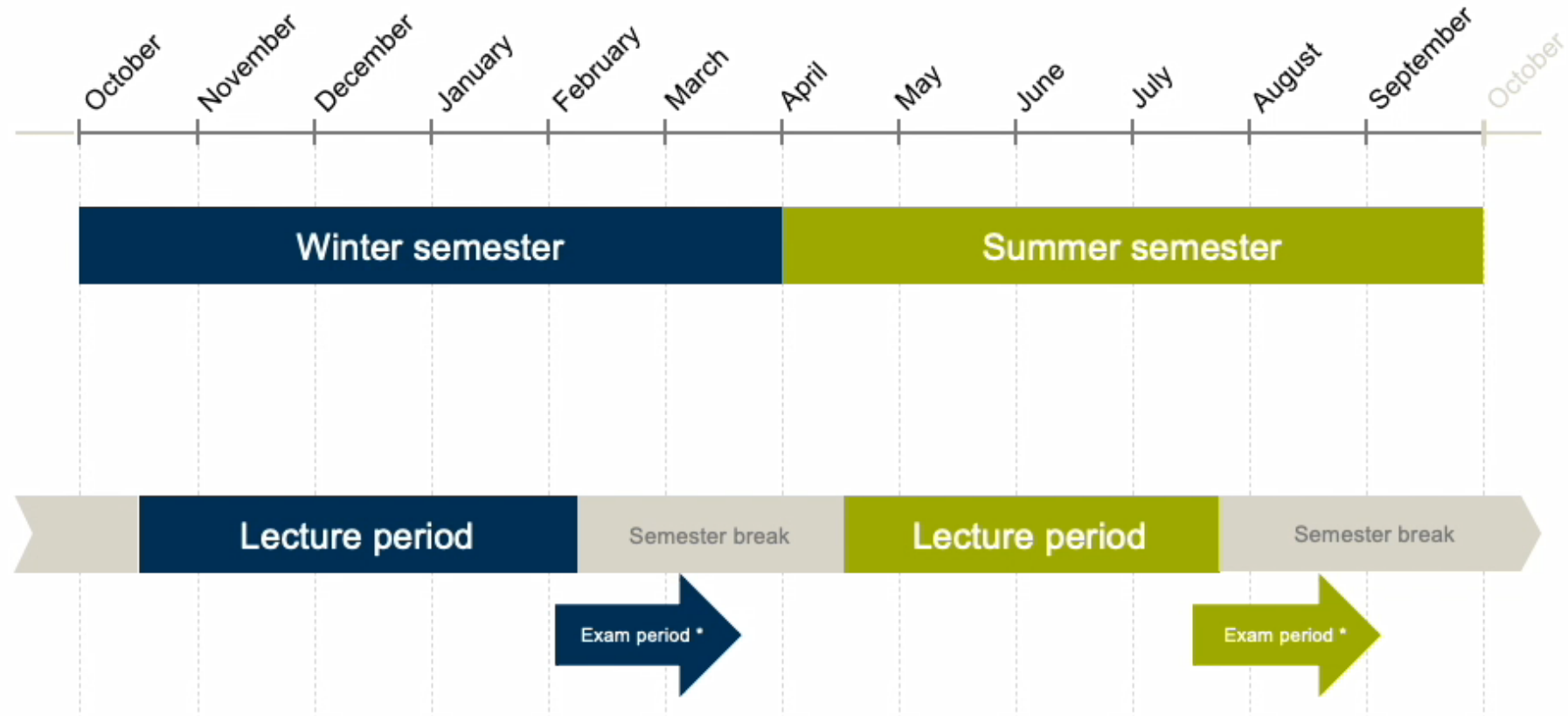


Estimated cost of living in euros	Munich	Heilbronn	Straubing
Student dormitories:	400-650 € per month (mostly only for students coming to TUM via the special program TUMexchange)	400-800 € per month	400-800€ per month
Private apartments, room in shared flat:	800-1200 € per month (we also offer our TUM MGT Accommodation Database to help you find housing)	400-800€ per month	400-700 € per month
Food/ meals:	350 € per month / Low priced meals in Student canteen available	300 € per month	300 € per month
Public transport:	Deutschlandticket for students: 38 € per month (optional)	Deutschlandticket: 49 € per month (optional) or 365 € annual ticket (optional)	Deutschlandticket for students: 38 € per month (optional)
Personal expenses:	Cost of living comparable to other western European countries	Cost of living comparable to other western European countries	Cost of living comparable to other western European countries
Health insurance:	Around 90-150 € per month (not for students with EHIC card)	Around 90-150 € per month (not for students with EHIC card)	Around 90-150 € per month (not for students with EHIC card)
Enrollment fee:	Administration fee of 85 € per semester	Administration fee of 85 € per semester	Administration fee of 72 € per semester
Estimation Cost of Living	at least 1300 €; average 1300-2000 €	at least 900 €; average 900-1200 €	at least 900 €; average 900-1200 €

Application facts and procedure

- As an international exchange student you can attend all lectures, tutorials and seminars held at TUM School of Management, just like home students, on both the B.Sc. and the M.Sc. level, so **you can freely choose from our offer**.
- English **language proficiency of B2** if you want to take only courses in English, (respectively a German language proficiency of B2, if you want to take also courses in German).
- You can even follow courses in other departments of the Technical University of Munich (at least 60% of your course choice and ECTS have to be from TUM School of Management).
- **Please create your study program (= learning agreement) based on our course catalogue that lists our most common courses and their ECTS.**
 - You can find the course catalogue here: <http://www.wi.tum.de/student-life/incoming-students/> (Before you arrive => Getting acquainted with your future courses).
- **Fact Sheet** with all important information for your exchange at TUM School of Management: <https://www.wi.tum.de/student-life/incoming-students/> (Application and requirements => Application procedure for incoming exchange students).

Studies at TUM – Academic Calendar



More information

[Dates and Deadlines](#)

*Exam period may vary between departments / schools

Find out more about us

• <https://www.mgt.tum.de/programs/international-exchange-programs/incoming-exchange-students>



website

• <https://www.facebook.com/TUM.School.of.Management/>



facebook

• <https://www.instagram.com/tum.school.of.management/?hl=en>



instagram



Sources of photos: <https://www.pinterest.com/pin/125256433366813995>
<https://en.facebookbrand.com/facebookapp/assets/f-logo/>

Get in contact with us



Ms. Zuzana ZECHOVSKA

Program Coordinator Student Exchange Programs (INCOMING – ERASMUS/SEMP)

for all inquiries from prospective incoming exchange students

Phone: +49 89 289-28185

incoming@mgt.tum.de



Ms. Eva SCHMIDHUBER

Program Coordinator Student Exchange Programs (INCOMING – NON-ERASMUS)

for all inquiries from prospective incoming exchange students

Phone: +49 89 289-28185

incoming@mgt.tum.de



Ms. Josephina BUHR

Program Coordinator Student Exchange Programs (Joint International Programs)

for all inquiries from prospective Joint International Program students

Phone: +49 89 289-25079

jip@mgt.tum.de or qtem@mgt.tum.de

**We look forward to
welcoming you here at
the TUM School of
Management**

