

The Right Step Forward



 EXCHANGE

# EXCHANGE PROGRAMME

---

PRAGUE UNIVERSITY OF ECONOMICS AND BUSINESS

---

CZECH REPUBLIC, CAMPUS PRAGUE



## PRAGUE

- More than **1.2** million inhabitants
- Historical centre of Prague included in the UNESCO World Heritage List
- <https://www.prague.eu/en>
- Political, cultural, and economic centre of the Czech lands for more than **1,100** years
- Hundreds of concert halls, galleries, cinemas and music clubs
- Famous festivals: Prague Spring International Music Festival, Prague Proms Festival, Febiofest, One World, Prague Food Festival and many others
- Unique architecture; gothic, baroque, renaissance and art nouveau buildings on one place
- Connected with many legends and myths, including famous Golem legend (Jewish Town)
- Favourite living place of Kafka, Dvořák, Mozart and many other famous personalities

### Infrastructure

- Easy connection to other European cities (by plane, train, coach)
- Václav Havel Airport Prague (<https://prg.aero/en>)
- Safe, reliable and well-arranged transport system including underground, trams, buses and trains
- All services: common ticketing system (<http://www.dpp.cz/en>)

## CZECH REPUBLIC

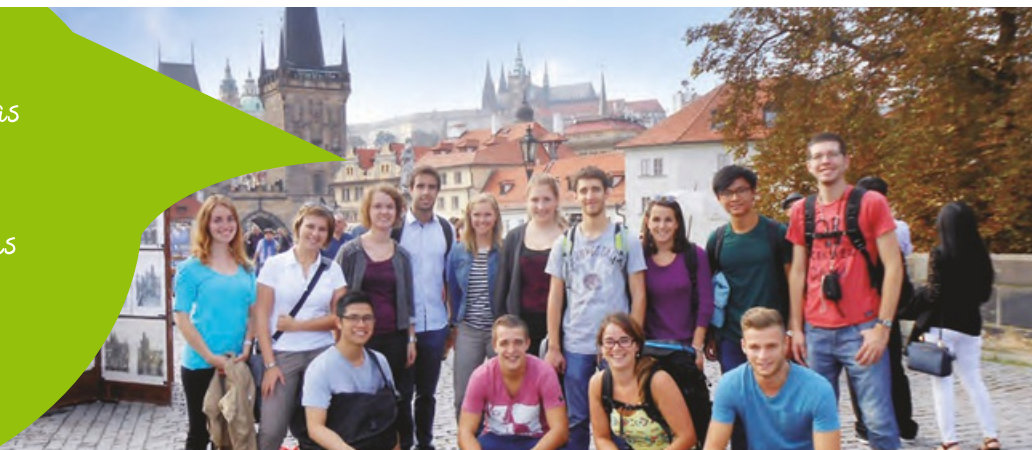
- Located in the heart of Europe
- Official language: Czech
- Currency: Czech Crown – CZK (koruna česká)  
**1 EUR = app. 26 CZK, 1 USD = app. 23 CZK**
- Time zone: GMT **+1**
- Capital: Prague (Praha)
- Famous for glass industry, hundreds of breweries and spas
- 16 UNESCO World Heritage sites
- Castles and chateaux all around the country
- Beautiful nature sceneries, including many national parks and preserved places, mountains and lowlands with vineyards

*I really loved the "International Management in English" course. We studied a lot about the cultural differences. It was my best subject here!*

*Brian, Emory University*

*The Exchange office was super helpful most of the times and we got answers to all questions we asked.*

*Min Hee, Sogang University*



## FACTS AND FIGURES ABOUT THE EXCHANGE PROGRAMME

### Course Information

- Tuition of all courses in the Exchange Programme located in Žižkov campus (Prague centre)
- Courses on graduate and undergraduate level
- Great variety of courses in different fields thanks to possibility to choose courses from all 5 faculties (+ an intensive course in Jindřichův Hradec campus): economics, finance, accounting, international business, diplomacy, marketing, management, logistics, informatics, statistics, public administration, political science, international relations, communication, human resources, tourism
- ECTS credits awarded upon completion of the course (credit range per course: **3–8 ECTS**)
- Course catalogue and syllabi available online at: **<https://exchange.vse.cz/> --> Incoming Exchange Students --> Courses and registrations**
- **2 types of courses: regular and intensive**
  - Regular courses: run through the whole semester, classes once or twice per week
  - Intensive courses: only couple of days during the semester, deep focus on one topic; mainly taught by visiting professors

### Basic Information

- **700** incoming students from **50** countries per year
- **250+** partner universities worldwide: **<https://exchange.vse.cz/partner-universities/>**
- **300+** courses for exchange students
- Main language of instruction: English
- Some courses given in: French, German, Spanish, Italian, Russian
- Recommended workload per semester: **20–30 ECTS**
- Academic year (September–June) organized in **2** semesters
- Eligibility for Exchange Programme: students from partner universities, intergovernmental agreements



*Thanks to Buddy system; I got the best buddy and person who help me that my experience in Prague was and is still awesome! I found the person who will be part of my life for a long time. I also want to say that Ice-breaking weekend was great; I met so many great people through the game and during this two parties. Everything was really great organized!*

*Javier, Universidad de Navarra*

## STUDENT LIFE

### Estimated Costs of Living\*

	CZK	EUR	USD
Accommodation (per month)	6000	230	260
Food (per month)	5000	192	217
Transportation ticket (monthly/90-day ticket)	130/360	5/14	6/16
University ID card	290	11	12
Copying (per copy)	1,5	0,06	0,07

### Orientation Week

- Takes place for whole week prior beginning of semester
- Students are provided with all necessary lectures about courses, university system, documents
- Students get familiar with Czech culture, habits and history
- Many trips and free-time activities are prepared for students

VSE has accommodation capacity for every prospective exchange student.

*\* please note that amount in EUR and USD might change according to current exchange rate*







### Student Association and Clubs

- Possibility to join various extracurricular activities according to student's interest
- Great opportunity to meet new people with similar interests, as well as specialists in the field (e.g. **AIESEC**, **AEGEE**, **OIKOS Praha**, **Gaudeamus**, **Toastmasters VŠE**, **xPORT...**)
- Scan the QR code for the full list and more details



### Sport activities

- Weekly indoor or outdoor sports and additional activities (Basketball, Tennis, Body building, Fitness Aerobics)
- Sport centres: on campus, at dormitories, Třebešín Hall – modern multifunctional hall

### ESN VSE Prague – Buddy System

- Buddies = domestic students, volunteers Exchange
- students are assigned a Buddy
- Local Buddies help exchange students to settle down and show them around
- First contact with the local Buddy prior to arrival
- Ice-Breaking Weekend during the Orientation Week
- Parties by Buddy System (Nation2Nation Party every week)
- Trips to Czech towns (e.g. Kutná Hora, Karlovy Vary, Moravian trip)
- Trips to towns abroad (e.g. Krakow, Dresden)
- Language Activities (e.g. Tandem Programme, Buddy Cafe Lingea)
- <https://esnvseprague.cz/>





*Prague and VSE was awesome. It was the best semester in my whole university life.*

*Joshua, University of Otago*

## FACTS AND FIGURES ABOUT VSE

- 26 bachelor (4 in English), 36 master (10 in English) and 16 doctoral programmes (full-time study)
- About 14,000 degree students
- More than 25 % degree students of other citizenship than Czech
- 4,000 graduates per year
- Publicly funded and fully accredited university
- The biggest higher education institution providing economic and management education in the Czech Republic
- Established in 1953
- 600 academic staff, 500 administrative and technical staff
- 3 campuses: 1 in Žižkov (Prague centre), 1 in the south of Prague, 1 in Jindřichův Hradec (South Bohemia)
- Programmes with EPAS accreditation, good ranking in Financial Times
- 1 faculty with EQUIS accreditation

### 6 Faculties

- Faculty of Finance and Accounting  
<https://ffu.vse.cz/english>
- Faculty of International Relations  
<https://fir.vse.cz>
- Faculty of Business Administration  
<https://fba.vse.cz>
- Faculty of Informatics and Statistics  
<https://fis.vse.cz/en>
- Faculty of Economics  
<https://nf.vse.cz/english>
- Faculty of Management  
(in Jindřichův Hradec, South Bohemia)  
<https://www.fm.vse.cz/en>

▶ <https://www.vse.cz/english>

▶ <https://exchange.vse.cz>





## VSE FACILITIES

### Library = Centre of Information and Library Services

- 3 branches of the University Library
- 430,000+ titles
- On-line catalogue of publications
- On-line ordering system
- Electronic resources (e-resources at VSE, e-resources at other Czech Universities, diploma theses, etc.) and Economic journals
- Individual and group study rooms



### Catering on Žižkov campus

- 3 different canteens on campus: regular canteen, Pizzeria, healthy and vegetarian food
- Subsidised lunch prices (from 58 CZK per meal). 2 hot meals a day (lunches and dinners)
- Canteen offer: hot meals, cold meals, soups, salads, drinks, ice cream, chocolate bars
- Café, buffet, restaurants on campus and many shops, groceries, cafés and restaurant in the vicinity



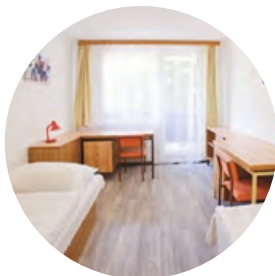
### Dormitories

- Located about 15–20 minutes from the Žižkov campus by tram
- Accommodation in flats with bathroom and kitchenette
- Shared rooms (2 students in a room)
- Canteen on the dormitory campus
- Washing-machines, dryers, flat irons and hoovers available
- TV room, study rooms, sports equipment
- Same dormitories for both local and international students
- <https://accommodation.vse.cz>



### Information Technology

- On-campus computer labs
- Wireless network (eduroam)
- Copy machines, printers, scanner
- Electronic ID card enables access to the dormitories, copying, printing, scanning, eating in the canteen, borrowing books from the library
- Integrated Study Information System (InSIS) enables easy registration of courses and exams







**International Office**  
Prague University of  
Economics and Business  
nám. Winstona Churchilla 4  
130 67 Praha 3,  
Czech Republic

**Head of International Office**

**Ms. Dana Brázdová**

✉ dana.brazdova@vse.cz

☎ +420 224 098 555

**Outgoing Students**

✉ ozs@vse.cz

☎ +420 224 098 555

**Incoming Students**

✉ exchange@vse.cz

☎ +420 224 098 547



video exchange



**Study in Prague**  
[www.studyinprague.cz](http://www.studyinprague.cz)



**Erasmus+**



<https://www.vse.cz/english>



<https://exchange.vse.cz>