



cedars
Centre of Development and Resources for Students
The University of Hong Kong
香港大學學生發展及資源中心

A GLIMPSE OF STUDENT LIFE @ HKU



FOR PROSPECTIVE STUDENTS 2022-23



Contents

- 3 Welcome
- 4 Must-know Facts of HKU
- 5 Introducing the Centre of Development and Resources for Students (CEDARS)
- 6 Academic and Admission Matters
- 7 Finances
- 10 Students Under 18
- 11 Equality, Diversity and Sustainability
- 13 Smoke-free Campus
- 14 Campus Facilities
- 23 Student Support and Resources
- 27 Student Life @HKU
- 29 Crisis and Emergency
- 33 Information for Non-local Students



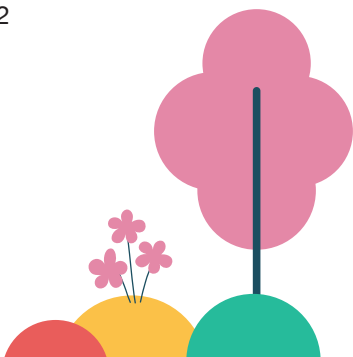
While you are considering to study at The University of Hong Kong (HKU), we would like to provide you with more information about our university – the oldest of all universities in a unique territory.

HKU considers university education as a total learning experience and HKU has much to offer, in terms of **academic achievement, personal development and cultural exposure**. Our goal is to help students acquire the experience that can benefit you lifelong. Towards this goal, the Centre of Development and Resources for Students (CEDARS) together with other units provide all the support that one may need. You are welcome to find out more about the wide range of services and the varied resources available on campus. Even before you become a student here, this booklet will provide a glimpse of student life at HKU.

We look forward to working with you to develop the rewarding total experience.

Professor Samson Tse
Dean of Student Affairs

February 2022





Must-know Facts of HKU

Founded in 1911, HKU is the oldest tertiary institution in Hong Kong. With a population of over 30,000 students, there are over 10,000 overseas students (excluding exchange-in students) in 2020/21.

HKU is a comprehensive university. It offers a wide spectrum of high quality programmes with an emphasis on encouraging a flexible approach to studies.

HKU received well-deserved recognition from prestigious global institutions. It ranked 1st in Hong Kong¹, 22nd in the World², 1st in Hong Kong for Best Global Universities³ and 1st most International University in the World⁴.

¹ *THE World University Rankings 2022*

² *QS World University Rankings 2022*

³ *US News 2022*

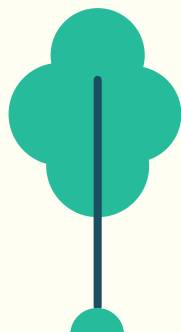
⁴ *THE Most International Universities in the World 2021*

HKU prides itself on its international community of students and staff, providing a vibrant, colourful campus life for everyone. Students can enjoy an international experience not just within the university but also through HKU's myriad of worldwide exchange programmes, summer schools and international internship opportunities.

Learn more: www.hku.hk



Introducing the Centre of Development and Resources for Students (CEDARS)



The Centre of Development and Resources for Students (CEDARS) is committed to fostering an intellectually stimulating and culturally diverse campus to enrich students' total learning experience at HKU. Bridging the boundary between classroom and the world, we provide support services, resources and educational programmes to facilitate students' learning.

Cedars are ornamental trees with durably scented wood and evergreen leaves; they signify growth, development and shelter which are the goals of our work for students. At CEDARS, we hope to nurture students with a durable scent of the intellect so that they are forever young and fresh.

As the one-stop student service and resources centre, and co-curricular learning hub, CEDARS comprises of three Sections and one Programme Team to provide comprehensive student services such as housing, financial support, employment preparation, professional counselling, SEN support as well as a spectrum of co-curricular learning and service opportunities.

- Campus Life Section
- Careers and Placement Section
- Counselling and Person Enrichment Section
- General Education Team



CEDARS

Website: www.cedars.hku.hk

Facebook: facebook.com/hku.cedars

Instagram: www.instagram.com/hku.cedars

YouTube Channel: www.youtube.com/hkucedars-official

Academic and Admission Matters

There are a variety of courses and programmes for students to enjoy an academic experience at HKU. Apart from studies, students gain internship experiences, personal and professional networks, and exciting exposure to the vibrant city life. Students interested in applying to our programmes can obtain detailed information at the following websites:

1. **Undergraduate programmes:** www.admissions.hku.hk
2. **Taught postgraduate programmes:** www.hku.hk/tpg

Admissions Office

Address: MG14, G/F, Main Building, The University of Hong Kong, Pokfulam Road, Hong Kong

Contact: www.admissions.hku.hk/contact-us

3. **Research postgraduate programmes:**

With its distinguished excellence in research and outstanding performance in teaching, HKU attracts first-class teaching and research staff and brilliant students from around the world.

A detailed guide to prospective students is available at www.gradsch.hku.hk (Prospective Students).

Applicants can also obtain detailed information at FAQ section: www.gradsch.hku.hk/faq

Graduate School

Address: Room P403, Graduate House, The University of Hong Kong, Pokfulam Road, Hong Kong

Contact: gradsch@hku.hk

4. **Summer programmes:** www.summerinstitute.hku.hk
5. **China Vision programmes:** www.chinavision.hku.hk
6. **Exchange and Visiting programmes:** <https://intlaffairs.hku.hk>

Academic Liaison Office

International Affairs Office

Address: 9/F, Knowles Building, The University of Hong Kong, Pokfulam Road, Hong Kong

Contact: goabroad@hku.hk

Mainland Affairs Office

Address: 9/F, Knowles Building, The University of Hong Kong, Pokfulam Road, Hong Kong

Contact: mainlandaffairs@hku.hk

Summer Institute

Address: G/F, Fong Shu Chuen Amenities Centre, The University of Hong Kong, Pokfulam Road, Hong Kong

Contact: <https://summerinstitute.hku.hk/contact-us>

Finances



Budget

You may consider the following items in your budget planning. The fees and charges stated below are based on those of the year of 2021/22 only. **The actual costs will increase for the year of 2022/23.**

Major expenditure (in HK dollar)		
Items	Undergraduate Students	Postgraduate Students
Academic Expenses		
Tuition fees	\$42,100 p.a.* (for local students) / \$171,000 (for non-local students) *This is for UGC-funded programmes only. For self-financing courses, the fees vary from programme to programme.	For students of taught courses, you need to check the tuition fees with the Faculty Office as fees vary from programme to programme. For research students: \$42,100 p.a.
Caution money and other expenses	\$350 Caution money	\$350 Caution money
Books and supplies (excluding personal computers & accessories)	Around \$8,100 - \$39,500 p.a. Some courses also incur significant expenses relating to overseas field trips and special equipment.	Around \$10,300 - \$49,800 p.a.

For the updated fees and charges, please refer to the following online student handbooks:

Undergraduate:

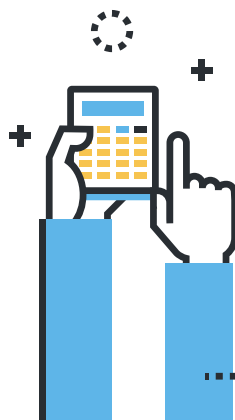
www.handbook.hku.hk/ug

Taught Postgraduate:

www.handbook.hku.hk/tpg

Research Postgraduate:

<https://gradsch.hku.hk> (Prospective Students)



Items		Undergraduate Students	Postgraduate Students
Housing Expenses			
University's residential halls & colleges	Lodging fees	\$17,100 - \$30,000 p.a. (from the end of August to the end of May)	\$20,000 - \$70,000 p.a.
	Hall miscellaneous charges	\$2,000 - \$3,000 p.a. These include students' association membership fees, compulsory high table fees, room and/or smartcard deposits, etc., excluding air-conditioning charge which varies with individual lifestyle and seasons (approximately \$200 per month in summer).	
	Compulsory hall meal charges	\$9,000 - \$13,500 p.a. (not all meals are covered)	
University-administered non-hall housing	Lodging fees	\$16,100 p.a. - \$98,000 p.a.	
Privately rented accommodation	Lodging fees	Single room from \$50 per sq.ft. up, excluding utilities	
Other Expenses			
Food, groceries and transportation		Around \$6,100 per month up (depending on your lifestyles and if you go grocery shopping around the campus)	
Other personal expenses		You also need to budget for your entertainment, overseas travel, insurance and medical expenses, etc.	

The following tables give you some reference figures on common meal and transportation items:

Meal Expenses (on-campus outlets)

On-campus catering outlets offer food at a variety of price range. Typically, students should allow approximately \$120 to \$150 per day for food at on-campus outlets. Students who prefer eating outside campus should expect 10%-20% extra on meal expenses.

Items	Typical Spending Per Meal (HK\$)
Breakfast	20 – 45
Lunch	25 – 65
Afternoon Tea	20 – 35
Dinner	30 – 65
Sandwiches	15 – 40
Bakeries	12 – 40
Salads	25 – 55
Beverages / Coffee	8 – 40
Snacks	8 – 25



Note:

- Apart from Ricci Hall, St. John's College and University Hall, there is currently no meal plan available at on-campus eateries.
- The above costs are for reference only and are subject to change.

Transportation Cost

Frequent routes	Fare per ride (HK\$)	Means of public transport
Sassoon Road to Main Campus	2 - 7	By University shuttle bus
	5 - 11.3	By bus or minibus
Main Campus to Central	5 - 11.3	By bus or MTR
Main Campus to Causeway Bay	5.1 - 11.7	By bus, minibus or MTR
Main Campus to Mongkok	11.3 - 18	By bus, minibus or MTR

Financial Resources



HKU provides financial resources, such as financial assistance and scholarships to students. Eligible students are welcome to apply for them.

Learn more: www.cedars.hku.hk/cedars-financial-resources

Government Financial Assistance (for local students only)

Eligible students who need financial support to their university studies are encouraged to apply for the Tertiary Student Finance Scheme and the Non-means Tested Loan Scheme administered by the Student Finance Office of the HKSAR Government.

Learn more: www.cedars.hku.hk/finance/govt.html

University Financial Assistance (for local students only)

University funds, available to local students, are in general used to supplement Government Grants and Loans. Applications are invited in early September each year. Emergency assistance is also available throughout the year.

Learn more: www.cedars.hku.hk/finance/ufa.html



Scholarships

Postgraduate scholarships are available for eligible students pursuing an M.Phil. or a Ph.D. degree.

Learn more: <https://gradsch.hku.hk>

Students applying for undergraduate admissions will be considered for entrance scholarships when they submit applications to HKU. The result will be announced at the same time when students receive an offer of admission. No separate application is required.

Learn more: <https://admissions.hku.hk>

Students may also apply for other scholarships after they are admitted to HKU.

Learn more: www.scholarships.hku.hk

Students Under 18



You may still be under the age of 18 at the time of admission to HKU. In this case, your parent/guardian is required to sign a consent form, without which the University may have difficulties in arranging some of the teaching and learning activities, and accommodation for you.

You will be generally treated as an adult and are expected to lead your academic and social lives in HKU as other students do. The University will correspond directly with you, but not your parent/guardian, on things related to you such as course enrollment, payment status of fees, academic status, results and grades, etc. Your parent/guardian will only be contacted in case of emergency or other situations where potential risks are involved.

Things to note:

1. Housing

If you are in need of student housing and are successful in your application, you will only be housed in University's student residences such as Halls, Non-halls and the Residential Colleges.

2. Banking arrangement

Students under 18 must be accompanied in person by their parent or legal guardian to open a bank account at one of the local banks. The University is not able to act as your guardian in this context.

For non-local students, please refer to p.38 for more details.



Equality, Diversity and Sustainability



Equal Opportunities

HKU is committed to creating, promoting and maintaining an environment which provides equality of opportunity for members of the University community and is free of any discrimination/harassment. We support equal opportunity and strongly oppose discrimination/harassment. We will take whatever action may be needed to prevent, and if necessary, discipline behaviour which violates the Equal Opportunity Policy.

Learn more: www.eounit.hku.hk

Handling Discrimination / Harassment Complaints

Our Equal Opportunity Policy forbids discrimination/harassment in activities carried out in the course of employment, education, provision of goods and services, or other activities organised by the offices of the University. Procedures for handling complaints of discrimination and harassment can be found on the website of the Equal Opportunity Unit.

Learn more: <https://www.eounit.hku.hk/images/content/complaints-enquiries/Procedures-for-Handling-Discrimination-Harassment-Complaints.pdf>

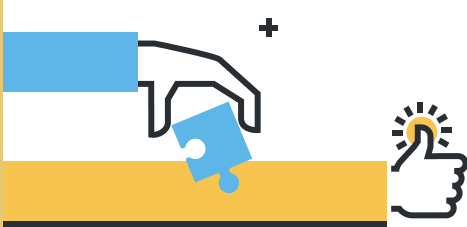
Parenting Needs

Facilities such as washrooms with baby-changing table at amenities centres, and baby care rooms on the Main Campus, Centennial Campus and Sassoon Road Campus are available to parent students during their time on campus.

Learn more: www.cedars.hku.hk/campuslife/student-amenities/baby-care-rooms

Procedures for the Resolutions of Grievances of Students

We have a set of procedures for students who wish to make a complaint on an administrative or academic matter. To learn more, please refer to the online handbook for undergraduate/taught postgraduate/MPhil and PhD programmes for information.



Religious Needs

The Halal Food Corner is not merely a catering space for the Muslim community on campus, it is also a platform for promotion of cultural diversity and interaction among university members. A multi-faith prayer room for students and staff members is also available on 1/F of Fong Shu Chuen Amenities Centre. It offers an option for those who are in need of special praying venue during the day.

Lesbian, Gay, Bisexual and Transgender (LGBT)

CEDARS is committed to fostering a diverse campus to enrich your learning experience at HKU. It takes an affirmative approach on gender diversity.

CEDARS-Counselling and Person Enrichment Section (CEDARS-CoPE) provides counselling service and welcomes anyone with struggles or questions on sexuality or gender identity, to speak with their psychologists or counsellors. It also advocates sexual diversity on campus through talks and activities.

Learn more about the counseling and psychological services:
www.cedars.hku.hk/cope

Sustainability

The Sustainability Unit of Estates Office works to collaboratively develop, strengthen, and realise HKU's institutional vision, commitments, and goals to integrate principles of sustainability into all aspects of the University's facilities, operations, and activities.

Learn more about the sustainability efforts of the University:
www.estates.hku.hk/eo-general/sustainability





Smoke-free Campus

HKU is a smoke-free campus.
Smoking is not allowed on campus,
both indoors and outdoors.



Campus Facilities



Amenities Centres

CEDARS manages three amenities centres (www.cedars.hku.hk/campuslife/student-amenities). The facilities are open for use by students and staff as individuals, groups and student bodies. Some facilities can be booked online for exclusive use.

Chong Yuet Ming Amenities Centre

Email: cymac@hku.hk

Website: www.cedars.hku.hk/campuslife/student-amenities/CYMAC

Multi-purpose room, meeting room, music rooms, band room, baby care room, shower rooms, exhibition counters, banner sties, student society rooms, supermarket, cafeteria, restaurant

Fong Shu Chuen Amenities Centre

Email: fscac@hku.hk

Website: www.cedars.hku.hk/campuslife/student-amenities/FSCAC

Multi-purpose rooms, meeting rooms, party room, music rooms, prayer room, coffee lounge, restaurant, student society rooms, banner sites, vCave

Pokfulam Amenities Centre

Email: pflac@hku.hk

Website: www.cedars.hku.hk/campuslife/student-amenities/PFLAC

Music room, games room, baby care room, assembly hall/lobby, photocopying corner



Chong Yuet Ming Cultural Centre

Chong Yuet Ming Cultural Centre (CYMCC) is located on 3/F and 4/F above the Chong Yuet Ming Amenities Centre on the Main Campus.

Studio 303 with a capacity of 148 seats, is an ideal performing venue for experimental performances in a variety of art forms, such as drama, dance, musical performance and theatrical workshop.

Busking area at 4/F is available for the use by student bodies and groups. They are welcome to present activities such as band show, dance battle or orchestral performance during lunch time. Booking is free of charge.

Enquiries:

Tel: (852) 28598006

Email: cymcc@hku.hk

Learn more: www.cedars.hku.hk/CYMCC



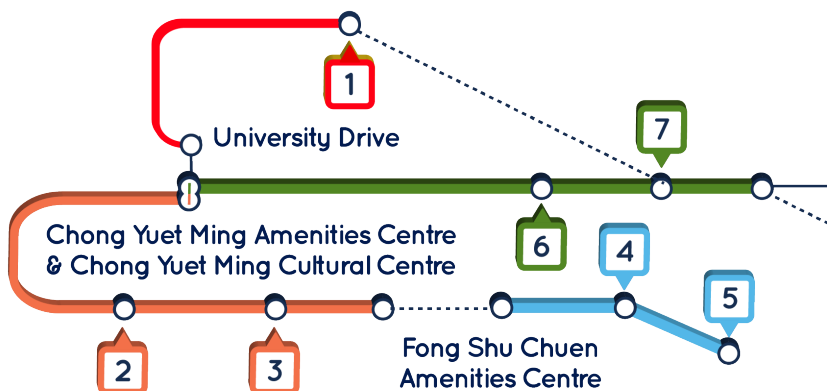
Catering

There are a number of canteens, restaurants, cafeterias, coffee shops and food kiosks locating across the campus, offering food with a variety of cuisines and service styles to cater for your need.

Learn more: www.cedars.hku.hk/catering

Food Map

Main Campus and Centennial Campus



1. Robert Black College Dining Hall

- Robert Black College, University Drive
- Chinese or Western set meal (table-served)

2. Chong Yuet Ming Amenities Centre Restaurant

- 4/F, Chong Yuet Ming Cultural Centre
- Local fast food and Cha Chaan Teng

3. Café 330

- 2/F, Chong Yuet Ming Amenities Centre
- Hot meal, salads, sandwiches and coffee

4. Fong Shu Chuen Amenities Centre Restaurant

- 2/F, Fong Shu Chuen Amenities Centre
- Local fast food and Asian food

5. Ebenezeer's Kebabs & Pizzeria

HKU Halal Food Corner

- 1/F, Fong Shu Chuen Amenities Centre
- Halal food and beverages

6. SUBWAY

- Run Run Shaw Podium
- Submarine sandwiches and beverages

7. Kiosk by The Sandwich Club

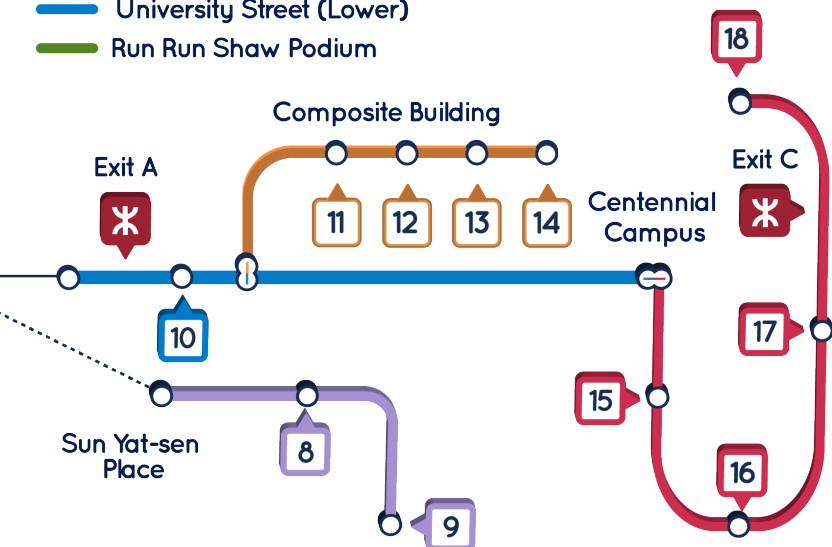
- Run Run Shaw Podium
- Bento boxes, pastries, sandwiches and salads

8. The Coffee Academics

- G/F, Library Building (Old Wing)
- Specialty coffee, sandwiches and salads



— University Street (Lower)
— Run Run Shaw Podium



9. Big Pizza

- 📍 Main Library Covered Podium
- 🌟 Halal Food - Pizza and drinks

10. Union Restaurant

- 📍 4/F, Haking Wong Building
- 🌟 Local fast food and Asian food

11. Sweet Bandott

- 📍 G/F, Composite Building
- 🌟 Japanese rice-ball, Japanese style meal box

12. Starbucks Coffee

- 📍 G/F, Composite Building
- 🌟 Coffee, pastries, sandwiches and salads

13. U Deli

- 📍 G/F, Composite Building
- 🌟 Lunch boxes and beverages

14. Cafeteria by Favilla

- 📍 G/F, Composite Building
- 🌟 Pour over coffee, Chinese and Western-style meals

15. Oliver's Super Sandwiches

- 📍 LG/F, The Jockey Club Tower, Centennial Campus
- 🌟 Sandwiches, baked potato, pasta, salad and coffee

16. alfafa café

- 📍 G/F, The Jockey Club Tower, Centennial Campus
- 🌟 Pasta, sandwiches, salads, pastries and specialty coffee

17. Gourmet Asia

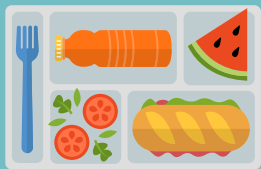
- 📍 G/F, Run Run Shaw Tower, Centennial Campus
- 🌟 Southeast Asia cuisine

18. BIJAS Vegetarian

- 📍 G/F, Run Run Shaw Tower, Centennial Campus
- 🌟 Vegetarian food (Chinese cuisine)



Website: cedars.hku.hk/catering

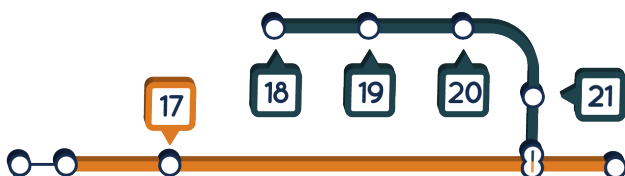


Food Map Sassoon Road Campus and Other Locations

 Pokfulam Road

 Sassoon Road

Sassoon Road Campus



17. Bay View Restaurant

-  LG/F, 6 Sassoon Road
-  Local and western dishes


18. SUBWAY

-  Fan Pui Garden, LG/F, William M.W. Mong Block, 21 Sassoon Road
-  Submarine sandwiches and beverages

19. 1887

-  7/F, William M.W. Mong Block, 21 Sassoon Road
-  Western cuisines (table-serviced)

20. Cupping Room Coffee Roaster

-  G/F, William M.W. Mong Block, 21 Sassoon Road
-  Specialty Coffee, pastries and hot food

21. Energy Café

-  Pitch 3, Stanley Ho Sports Centre, Sandy Bay
-  Rice, noodle, sandwiches, toast, sports drinks, beverages and snacks

Website: cedars.hku.hk/catering



Libraries

The HKU Libraries consists of the Main Library and six specialist branch libraries. The Main Library comprises an all-round collection of materials in arts, humanities, architecture, social sciences, and science and technology. The Libraries also has a rich collection of audio-visual materials and reserve materials, as well as the Special Collections which houses a unique collection of Hong Kong materials, rare book, pamphlets, and microforms. The other six specialist libraries are: Dental Library, Fung Ping Shan Library, Lui Che Woo Law Library, Music Library, Tin Ka Ping Education Library, and the Yu Chun Keung Medical Library.

The Libraries provides photocopiers and laser printers for users to make a copy of documents for the purposes of research, private study, criticism or review. Located on the 3/F of the Main Library, Level 3 is a learning commons style facility providing a variety of spaces suitable for different learning styles including reflective self-study as well as collaborative study.

Learn more: www.lib.hku.hk





Learning Spaces

The Learning Commons is a campus hub equipped with modern learning facilities that encourages and facilitates individual and group study. A variety of spaces are provided for individual and self-paced learning. These include quiet study areas, reading and lounging areas and individual workstations. Collaborative learning spaces are provided in the form of group study rooms, more traditionally styled work tables as well as diner booth style places that are well suited to group interactivity.

- Chi Wah Learning Commons: Podium Levels, Centennial Campus
- The Curve: 1/F and 2/F, K.K. Leung Building

Learn more: www.les.hku.hk/teaching-learning/learning-space

Information Technology Services (ITS)

Information Technology Services (ITS) runs 24-hour, non-stop system and network services to support the IT needs of the University. All students are given a computer account, identified uniquely by an HKU Portal UID (User Identification) and an associated PIN (Personal Identification Number), for accessing a wide range of network services and applications conveniently.

HKU Portal provides a one-stop interface for University members to access all the centrally provided IT services including Student Information System (SIS), email, learning management system Moodle and Library services.

ITS looks after the central learning environment of the University, comprising classrooms, lecture theatres, Chi Wah Learning Commons and The Curve (1/F and 2/F of K.K. Leung Building). A wide variety of facilities is provided to support the technology-enabled learning experience.

Orientation courses are offered to new students at the start of each academic year. Regular IT seminars, induction courses and training workshops on popular IT topics and commonly used software packages are also held throughout the year. Students may visit the Service Desk and the General Enquiry Counter on the 1/F of Library Building (Old Wing) or through the multiple channels described at www.its.hku.hk/service-desk to get assistance in using the central computing and network services.

Learn more: www.its.hku.hk



Daily Life Necessities

HKU offers a wide variety of facilities and services to meet the daily life necessities of students. Some examples are:

- Banking
- Bookstores
- Stationery shops
- Supermarket
- Lockers
- Baby care rooms
- Newspapers
- Photocopying services
- Postal services
- Fax services
- Shuttle bus service
- KMB fare saver kiosk
- And more...

Please refer to the campus map of HKU at <http://www.maps.hku.hk>



Student Sports and Recreation

The Centre for Sports and Exercise (CSE) offers a wide range of sports and fitness programmes, including:

- Uni-Sport
- Uni-Adventure
- Exercise is Medicine on Campus (a partnership with University Health Service (UHS) to promote physical activity as a vital sign of health via a medical-to-exercise referral network).

Learn more: <https://www.eim.cse.hku.hk>

The CSE also manages the following sports facilities:

- Flora Ho Sports Centre on Pokfulam Road (mainly indoor sports facilities)
- Henry Fok Swimming Pool, Stanley Ho Sports Centre at Sandy Bay (mainly outdoor sports facilities)
- 4 Fitness Centres in Flora Ho Sports Centre, Henry Fok Health & Fitness Complex, the Active (Centennial Campus), and the HKU B-Active (Shek Tong Tsui)
- 6 Tennis courts at Stanley Ho Sports Centre

Competitive Sports

Intramural Competitive sports opportunities are provided through the inter-hall and inter-faculty competitions. Some of the 24 student sports clubs and their respective University Teams represent HKU at Interuniversity Competitions. The University's **Sports Scholarship Scheme** allows talented local athletes to balance their studies and athletic activities.

Learn more: www.cse.hku.hk





Student Support and Resources

Student Housing

Our 17 residential halls and colleges are more than a place to sleep – they are a fun and essential part of the HKU experience. As members of halls and colleges have to learn to be independent and interact closely with students of various backgrounds under the same roof, halls are a community of students seeking social and intellectual enrichment.

Each hall has its own tradition, culture and unique characteristics. Other accommodation options including non-hall housing and off-campus housing are available to suit different lifestyles and budgets of students.

Learn more: www.cedars.hku.hk/housing





Health and Wellness

University Health Service (UHS)

University Health Service (UHS) has an on-campus clinic providing health and dental care services to students. Primary care service at the UHS is provided by a team of highly qualified and experienced doctors. In general, medical consultation is free of charge, but some investigations and medication are at a cost. A notional charge is also levied for dental treatment and physiotherapy treatment at the University clinic.

For non-local students, please refer to p.37 for information on the fees and charges applicable for specialist care and hospitalisation.

Email: uhealth@hku.hk

Learn more: www.uhs.hku.hk

Counselling and Person Enrichment

CEDARS-Counselling and Person Enrichment Section (CEDARS-CoPE) is committed to empowering students to develop social capability and emotional resilience, to capitalise on their character strengths, and to live a fulfilling and psychologically healthy life so that they are able to achieve personal success, overcome life challenges and contribute to the community by demonstrating integrity, sensitivity and leadership.

CEDARS-CoPE offers:

- Professional, confidential and free of charge counselling and psychological services
- Comprehensive service and support for students with Special Educational Needs (SEN)
- Semester-based person enrichment programmes

Email: cedars-cope@hku.hk

Learn more: www.cedars.hku.hk/cope



Support for Students with Disabilities and/or Special Educational Needs (SEN)



CEDARS is committed to supporting students with disabilities or Special Educational Needs (SEN) in overcoming barriers and achieving successful university education. We are the one-stop service unit for students with physical and sensory disabilities, learning and developmental disabilities, mental illnesses, chronic medical illnesses or multiple disabilities.

We provide comprehensive service and support to facilitate students' university adjustment and learning:

- Accessible routing
- Information on campus facilities
- Support for application for special housing arrangements
- Special classroom and examination arrangements
- On-loan learning aids / equipment
- Information on funding resources to procure learning aids / equipment / services
- Peer support
- Employment preparation
- Counselling service
- And more...

For more details about SEN support, please contact CEDARS-SEN Support.

Email: cedars-SEN@hku.hk

Learn more: www.cedars.hku.hk/cope/sen-support



Careers and Placement

CEDARS-Careers and Placement Section is committed to nurturing students to become global talent with enduring capabilities to create possibilities and embrace opportunities. We are passionate in supporting HKU students to unleash their potential in a modern workplace, explore different career configurations and upskill continually through diverse career-driven learning experiences. We also collaborate seamlessly with employers and community partners to identify and groom future-ready graduates who bring positive impacts on different organisations in Hong Kong and beyond.

Email: careers@hku.hk

Learn more: www.cedars.hku.hk/cp

Language Support



Merci!



Děkuju!



Tack!



Thanks!

The School of Modern Languages and Cultures offers degree and non-degree language courses.

Learn more: www.smlc.hku.hk

The Centre for Applied English Studies (CAES) provides English language support through a wide range of credit-bearing and elective courses, and self-directed learning opportunities. English support is also offered beyond the classroom by our Communication Support Services (CSS) through a variety of writing, speaking and digital consultations as well as workshops and discussions. CAES also offers Small Private Online Courses (SPOCs) that combine online learning and face to face sessions to focus on specific areas of language use.

Learn more: <https://caes.hku.hk/css>, <https://caes.hku.hk/spocs> and <https://caes.hku.hk>

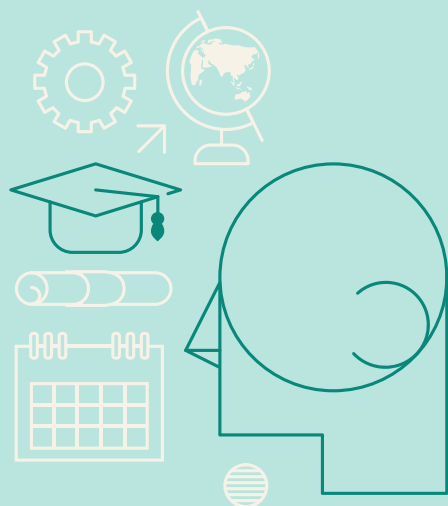
The Chinese Language Centre offers courses in Cantonese, Putonghua (Mandarin), as well as Chinese language and cultural courses for local and non-local students.

Learn more: <https://web.chinese.hku.hk>

Individual Peer Tutoring Programmes on Language, namely the “Survival Cantonese” and the “Peer English Tutoring” are offered to help newcomers better adjust to the learning and social environment at the University and to facilitate greater integration of local and non-local students.

Learn more: www.cedars.hku.hk/cope

Student Life @HKU



Student Groups and Networks

Co-curricular Support Office (CCSO)

The CCSO is an administrative unit being set up under the Registry to facilitate the provision of resources and facilities to support the co-curricular activities and events of our student community. A list of registered student bodies is available at the CCSO website.

Learn more: www.ccsso.hku.hk

Societies and Activities

In HKU, there are around 130 student organisations and each with distinctive objectives and functions that cater to the diverse interest of the student population. Serving from Undergraduates to Postgraduates, we have various categories of student bodies in service: Faculty and Academic Societies, Hall Students' Associations, Sports Club, Cultural Clubs and Independent Clubs.

A list of student associations, clubs and societies is available at www.cedars.hku.hk/campuslife/societiesactivities/associations

Learn more about Postgraduate Student Association (PGSA): www.pgsa.hku.hk



iMAP

iMAP is an online social networking platform for the HKU community exclusively. Members can search for private accommodation nearby, look for flatmates and other fellow students by interests, talent, nationality, current location and overseas experience, etc. They can also stay in touch with the rest of the HKU community and share their travel experience while abroad.

Learn more: www.cedars.hku.hk/imap

Induction Activities

At the start of every academic year, Faculties, Departments and other University Offices (e.g. Centre of Development and Resources for Students (CEDARS), University Health Service (UHS), HKU Libraries, etc.) organise induction activities for new HKU students. The Induction Programme series of CEDARS, the Inauguration Ceremony, and CEDARS Peer Connect and High Table are just some of the exciting examples on offer. All these activities are designed to help you integrate with the rest of the University and to cultivate your sense of identity as a member of HKU.

Learn more: www.fye.hku.hk

University Support Under COVID-19

To assist members of the HKU community during the challenges and fast-moving developments brought about by the outbreak in Hong Kong, the COVID-19 Info Hub is a resource centre that brings together updates, information and advice related to the University's activities.

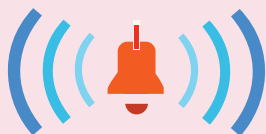
Learn more: covid19.hku.hk

The COVID-19 pandemic has had a significant impact on many aspects of student life. Browse and share the GEARING UP website for the vital information and resources to gear up your psychological well-being, career skill sets, physical fitness and healthy living in times of COVID-19.

Learn more: covid19gearingup.hku.hk



Crisis and Emergency



HKU provides physical and mental health services and financial assistance to students who are in urgent need:

University Health Service (UHS) **Emergency Medical Services**



Address: 2/F and 3/F, Meng Wah Complex
Mon to Fri: 8:40am – 5pm; Sat: 8:25am – 12:45pm

Emergency: (852) 3917 1999*

Dental Emergencies: (852) 2859 2511*

* Support is only available during office hours

When the clinic is closed, please go to the nearest Accident and Emergency Department at Queen Mary Hospital, 102 Pokfulam Road, Hong Kong.

Learn more: www.uhs.hku.hk and www.safety.hku.hk/homepage/pdf/RfME.pdf

CEDARS-Counselling and Person Enrichment Section **(CoPE)**

Counselling Service

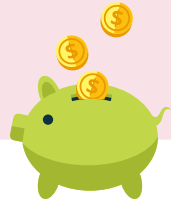
Address: Room 301-323, 3/F, Main Building
Mon to Thu: 9am – 5:45pm; Fri: 9am – 6pm; Sat: 9am – 1pm

To make an appointment, please call (852) 3917 8388, email cedars-cope@hku.hk or visit Room 301-323, 3/F, Main Building.

During after-office hours, please go to the nearest medical doctor or Accident and Emergency Department at the hospital for immediate support.

Learn more: www.cedars.hku.hk/cope





CEDARS–Campus Life Section

University Financial Assistance – Emergency Assistance

Address: 3/F, Meng Wah Complex

Mon to Thu: 9am – 5:45pm; Fri: 9am – 6pm; Sat: 9am – 1pm

Call CEDARS at (852) 3917 2305 for an appointment to meet a Student Advising Officer for assessment of your needs.

Learn more:

www.cedars.hku.hk/campuslife/finances/ufa-emergency-assistance

Estates Office

24-hour Security Control Centre

Address: Room 310, 3/F, Pao Siu Loong Building

Tel: (852) 3917 2882

Learn more:

<https://www.estates.hku.hk/our-services/facility-management/security>

You may also find the following useful:



✚ Lost and Found Tel: (852)
3917 2883

✚ Public health, Pandemic,
Epidemic diseases Preparedness
and Response:
[www.uhs.hku.hk/phpedpr/index.
php](http://www.uhs.hku.hk/phpedpr/index.php)

Insurance Coverage

HKU has arranged the following two insurance policies for its registered students:

- i. (i) Corporate Travel Insurance which is for covering students whilst travelling outside Hong Kong on a bona fide business/study trip authorised by the University in connection with the University's business such as exchange programmes, field trips or overseas study visits etc.
- ii. Group Personal Accident policy ("GPA") which is for covering students against any accidental loss sustained as a result of injury or sickness (i.e. restricted and limited to medical expenses only) whilst participating and/or attending in an event or activity organized / supervised / approved by the University within and/or outside Hong Kong such as field trips, project work, or site visits etc.

Students are not required to apply for the above insurance covers or to make any declaration in advance. Please note that the University would only provide standard travel insurance coverage for the business trips / activities of the University, and would not insure any personal cash or property of students in any circumstances. If additional or special insurance cover is required, it is entirely up to the student concerned to make personal arrangement at his/her own expense. Since many insurance policies are operating strictly on a reimbursement basis, you might have to settle the bills first before you can make a claim for reimbursement with the insurance company. It is therefore important for you to check carefully with your insurance company on the extent of coverage and claim procedures, and set aside a sum of money for contingencies. For more information about the insurance coverage arranged by HKU, you may contact the Finance and Enterprises Office of the University through email at foe_insurance@hku.hk.

Emergency Assistance When Travel Overseas

Travelling outside Hong Kong (including exchange programmes, overseas internships, career learning trips, service learning, competitions, academic activities, etc.) may involve some potential health and safety risk. HKU has a range of resources and information available to support you in planning a trip and coping with a crisis outside Hong Kong. The one-stop “Crisis and Emergency Outside Hong Kong” webpage (www.cedars.hku.hk/overseasemergencyassistance) brings together information and support services available at the University such as insurance coverage and arrangement, engagement of Inter Partner Assistance Hong Kong Ltd. (“IPA”) for provision of general assistance, local information and travel advice, key contact information of the University and Consulates, reminders before departure, and other useful tips and precautions.



Information for Non-local Students

CEDARS as a whole provides a range of support services to non-local students and CEDARS-Campus Life Section is your first contact. We offer you specific support upon admission into HKU.



Campus Life Support

- We provide information and assistance on non-academic matters
- We give assistance and guidance on:
 - Housing services
 - Orientation programmes (Weeks of Welcome)
 - Information on pre-arrival, arriving Hong Kong and settling-in
 - Social and networking opportunities

Why talk to us?



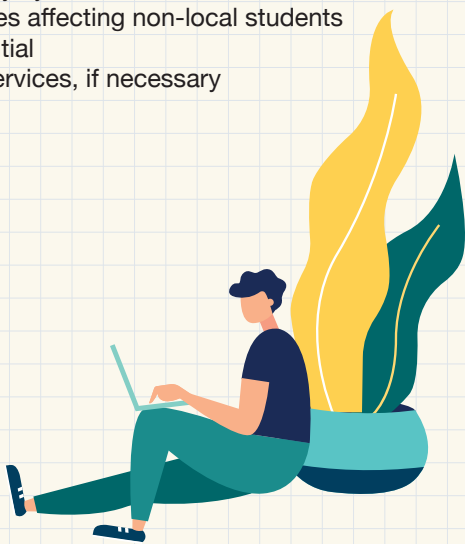
- We are experienced in helping students
- We understand the university system
- We have knowledge of issues affecting non-local students
- All discussions are confidential
- We can refer you to other services, if necessary

CEDARS – Campus Life Section

Address: 3/F, Meng Wah Complex

Email: cedars@hku.hk

Learn more: www.cedars.hku.hk/wow





Visa Matters

Who should apply for a student visa?

Generally speaking, if you wish to study in Hong Kong and you do not have the right of abode or right to land in Hong Kong, you need to apply for a student visa / entry permit to Hong Kong.

When to apply?

You should proceed with your student visa application as soon as you receive a conditional / confirmed offer of admission.

Visa sponsor office

For all non-local students, you are required to apply for your student visa / entry permit through Admissions Office (AO). Please refer to the AO website for detailed information on visa application procedure.

Contact: <https://www.studentvisa.hku.hk/contact-us>

Learn more: www.studentvisa.hku.hk

Family Matters



Should I bring along my own family?

Before making a decision whether or not to bring your family to Hong Kong, it is important to consider the following issues:

- The airfare expenses for your family to and from Hong Kong
- Additional accommodation expenses as you may need to rent a larger flat
- Extra cost for food, clothing and other necessities
- Restricted employment opportunities for your spouse
- Provision of child care facilities
- Whether your children will adjust well to schools in Hong Kong
- English-speaking schools are mostly privately run and expensive
- The impact on you and your studies if your family is not happy in Hong Kong
- Whether you will come to Hong Kong first and arrange things for your family, or bring your family to Hong Kong together with you

Financial Matters

How can I transfer money to Hong Kong for use on arrival if I do not have a bank account in Hong Kong?

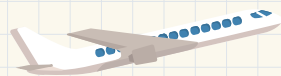
This can be done, either

- by instructing an overseas bank one to two weeks prior to your departure. Arrange to send money in your name to a bank in Hong Kong (both HSBC and the Bank of East Asia have branches on the HKU campus); or
- by carrying traveller's cheques or bank drafts for deposit into a local account (personal cheques can also be deposited but may take up to three weeks to be cleared).



How much money should I bring to Hong Kong?

There are usually significant extra expenses in the first month of your stay, such as rental charges, household items and textbooks. On top of the tuition fees, expenses for the first month can amount to HK\$10,000 or more for a student. It is important to have a realistic idea of the amount of money you will need and plan accordingly.



You are advised to bring enough cash, traveller's cheques, or bank drafts to cover expenses of at least your first month. Do not, however, carry too much cash at any time.

You can obtain a bank draft or transfer money to a bank account in Hong Kong through your local bank. Keep in mind that it may take some time to cash a bank draft with a large amount of money. Money transfers should be arranged well before your departure.

The official currency of Hong Kong is Hong Kong Dollar (HK\$). You can exchange Hong Kong Dollar with foreign currency or traveller's cheques according to the daily exchange rates at any banks or money exchange shops in Hong Kong.

Will I have access to banks and automated teller machines (ATM) on campus?

There are two banks and ATMs located on campus:

HSBC branch + ATMs (Tel: (852) 2233 3000)

The Bank of East Asia branch + ATMs (Tel: (852) 3609 1812)

Bank of China branch (ATM only)

Check their locations at www.maps.hku.hk

Can I take up part-time employment and summer jobs?

Under the existing immigration regulations, non-local students in full-time full-degree programmes are allowed to work at the designated operators on the HKU campus for up to 20 hours per week during term time. They can also work full-time during the summer months within the currency of their limit of stay while they remain as a student at HKU. For details, please refer to the No Objection Letter (NOL) issued by the Hong Kong Immigration Department (ImmD) attached to your visa label. Or you may find such guidelines on the ImmD website: www.immd.gov.hk/eng/services/visas/study.html (After applying → Conditions of Stay).

While some students can earn extra money from part-time and vacation work, the availability of suitable jobs is not guaranteed. It is not advisable to plan your budget expecting to find work for the maximum allowable hours.



Medical Care

How do I access to specialist care or hospitalisation?

When specialist care or hospitalisation are required, you can consider using the services provided at (i) public clinics and general wards of government hospitals or (ii) private clinics and hospitals in the market.

To be eligible for receiving subsidised public healthcare services in public hospitals/clinics, a non-local student who has been permitted to remain in Hong Kong for more than 180 days **MUST** present a valid Hong Kong Identity Card when he/she is attending public hospitals/clinics for registration.

For a non-local student whose length of stay in Hong Kong is less than 180 days, he/she **MUST** present a valid travel document and student visa issued by the Hong Kong Immigration Department with the label/sticker/stamp indicating that “one is not a visitor” and “one has not overstayed”.

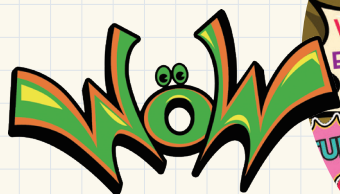
Non-local students without the aforesaid document(s) are required to pay full fees for services and hospitalisation in government hospitals.

For details of the fees charged by government hospitals, please visit www.ha.org.hk (Services Guides → Fees and Charges).

Insurance Coverage

Do I need to get my own medical insurance?

Non-local students who are going to spend more than 180 days in Hong Kong are eligible to apply for a Hong Kong Identity Card (HKID Card), and he/she may enjoy the subsidised public healthcare services provided by the HKSAR Government. However, the demand for the said public services is very high and may not meet your urgent or special medical needs. Given that the University would only provide primary healthcare services, it is therefore highly recommended for all non-local students irrespective of your length of stay in Hong Kong to get your own medical and hospitalisation insurance before your departure from your home country. If you plan to travel to other countries for personal business during your study in HKU, you are advised to purchase an insurance policy with worldwide coverage.



Weeks of Welcome (WoW)

What kinds of induction activities are available?

A series of induction activities for newly arrived non-local students are available. The activities, which are a mixture of fun, fact finding, visits and tours, aim to help the newly arrived to settle down, induct into the local way, enhance cross cultural experience and sharing, as well as explore new environment and people. Local students will serve as student hosts to lead these activities and introduce HKU and Hong Kong to new students.

Learn more: www.cedars.hku.hk/wow

Non-local Students under the age of 18



What information do I need to know if I am under 18?

1. Student visa application

Your parent needs to nominate a local Hong Kong resident to be your guardian when applying for a student visa. Details of such nomination can be found on the guardian nomination form. Please consult the Admissions Office (see p.34) if you have further enquiries.

2. Hong Kong Identity Card

If your parent has nominated a relative to be your local guardian to the Hong Kong Immigration Department, you should be accompanied by that local guardian when you submit your Hong Kong Identity Card application at the Hong Kong Immigration Department.

If your parent has nominated “The University of Hong Kong” to be your local guardian, you can just submit your application to the Hong Kong Immigration Department on your own. You will be asked to fill in a declaration form there.

3. Banking arrangement

Students under 18 must be accompanied in person by their parent or legal guardian to open a bank account at one of the local banks. The University is not able to act as your guardian in this context.

A stylized illustration of a woman with long dark hair, wearing a light blue cardigan over a dark top and red pants, sitting on a yellow surface and using a laptop. The background is a solid light blue color with horizontal dotted lines.



cedars
Centre of Development and Resources for Students
The University of Hong Kong
香港大學學生發展及資源中心